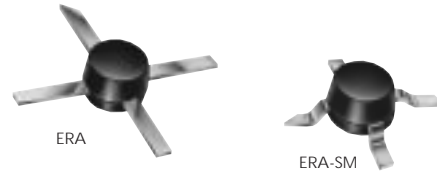


MONOLITHIC AMPLIFIERS

50Ω Drop-In & Surface Mount

BROADBAND DC to 8 GHz



All specifications at 25°C

MODEL NO.	FREQ. GHz f _i - f _u	GAIN, dB Typical										MAXIMUM POWER (dBm) at 2 GHz*		DYNAMIC RANGE at 2 GHz*		VSWR (∶1) Typ.				ABSOLUTE MAXIMUM RATING ³		DC OPERATING POWER at Pin 3		THERMAL RESISTANCE	CASE STYLE	CONNECTION	PRICE \$
		over frequency, GHz								Min. @ 2 GHz	Flatness DC-2 GHz	Output (1 dB Comp.) Typ.	Input (no dmg) Min.	NF (dB) Typ.	IP3 (dBm) Typ.	In DC-3 GHz	Out 3-f _u ** DC-3 GHz	DC-3 3-f _u ** GHz	I (mA)	P (mW)	Current (mA)	Volt Typ.	θ _{jc} Typ. °C/W	Note B	QTY. (30)	PRICE \$	
		0.1	1	2	3	4	6	8																			
ERA-1	DC-8	12.2	12.1	11.8	11.5	11.3	11.0	10.2	9	±0.3	11.7	9.7	15	5.3	26	1.6	1.8	1.5	1.9	75	330	40	3.6	455	VV105	cb	1.37
ERA-2	DC-6	16.2	16.0	15.6	15.1	14.6	14.0	—	12	±0.3	12.8	11	15	4.7	26	1.4	1.4	1.4	1.6	75	330	40	3.6	455	VV105	cb	1.52
ERA-3	DC-3	22.9	22.2	20.8	19.2	—	—	—	17	±1.1	12.1	9	13	3.8	23	1.7	—	1.7	—	75	330	35	3.5	432	VV105	cb	1.67
ERA-4	DC-4	13.8	13.7	13.5	13.3	13.0	—	—	11	±0.2	17.0	15	20	5.5	32.5	1.6	1.6	1.4	1.6	120	650	65	5.0	278	VV105	cb	3.85
ERA-5	DC-4	20.2	19.8	18.8	17.7	16.4	—	—	16	±0.75	18.4	16.5	13	4.5	33	1.2	1.2	1.3	1.5	120	650	65	4.9	278	VV105	cb	3.85
ERA-6	DC-4	11.1	11.1	11.3	11.5	11.3	—	—	10	±0.2	18.5	16.5	20	8.4	36.5	1.3	1.3	1.6	1.6	120	850	70	5.5	220	VV105	cb	3.85
ERA-1SM	DC-8	12.3	12.1	11.8	11.2	10.8	10.4	9.2	9	±0.3	11.3	9.3	15	5.5	26	1.6	1.9	1.5	1.9	75	330	40	3.6	460	WW107	cb	1.42
ERA-2SM	DC-6	16.2	15.8	15.2	14.4	13.6	13.0	—	12	±0.5	12.4	10.5	15	4.6	26	1.5	1.6	1.5	1.7	75	330	40	3.6	460	WW107	cb	1.57
ERA-3SM	DC-3	22.8	21.8	20.2	18.4	—	—	—	16	±1.3	11.5	9	13	3.8	23	1.5	—	1.5	—	75	330	35	3.5	437	WW107	cb	1.72
ERA-4SM	DC-4	14.0	13.8	13.5	13.2	12.7	—	—	11	±0.3	16.8	15	20	5.2	33	1.6	1.6	1.3	1.5	120	650	65	5.0	283	WW107	cb	3.90
ERA-5SM	DC-4	20.2	19.5	18.5	17.3	16.2	—	—	16	±1.0	18.4	16.5	13	4.3	32.5	1.3	1.3	1.2	1.3	120	650	65	4.9	283	WW107	cb	3.90
ERA-6SM	DC-4	11.2	11.2	11.3	11.4	11.2	—	—	10	±0.2	17.9	16	20	8.4	36	1.3	1.3	1.6	1.5	120	850	70	5.5	225	WW107	cb	3.90

features

- miniature microwave amplifier
- available in drop-in & surface mount (sm) versions
- frequency range, DC to 8 GHz, usable to 10 GHz
- up to 18.5 dBm typ. (16.5 dBm min) output power

absolute maximum ratings

operating temperature: -45°C to 85°C
 storage temperature: -65° to 150°C
 device voltage: 3.0V min., 4.1V max. for ERA 1,2,3
 4.2V min., 5.5V max. for ERA 4,5
 5.0V min., 6.0V max. for ERA-6

NOTES:

- ◆ Aqueous washable
- * at 1 GHz for ERA 4, 5, 6, 4SM, 5SM, 6SM.
- ** f_u is the upper frequency limit for each model as shown in the table.
- ⊕ Low frequency cutoff determined by external coupling capacitors.
- A. Environmental specifications and re-flow soldering information available in General Information Section.
- B. Units are non-hermetic unless otherwise noted. For details on case dimensions & finishes see "Case Styles & Outline Drawings".
- C. Prices and Specifications subject to change without notice.
- D. For Quality Control Procedures see Table of Contents, Section 0, "Mini-Circuits Guarantees Quality" article. For Environmental Specifications see Amplifier Selection Guide.
- 1. Model number designated by alphanumeric code marking.
- 2. ERA-SM models available on tape and reel.
- 3. Permanent damage may occur if any of these limits are exceeded.

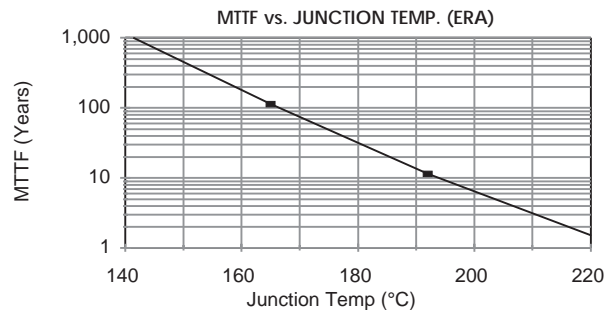
designers kits available

KIT NO.	Model Type	No. of Units in Kit	Description	Price \$ per kit
K1-ERA	ERA	30	10 of each 1,2,3	49.95
K2-ERA	ERA	20	10 of each 4,5	69.95
K1-ERASM	ERA-SM	30	10 of each 1SM, 2SM,3SM	49.95
K2-ERASM	ERA-SM	20	10 of each 4SM, 5SM	69.95
K3-ERASM	ERA-SM	30	10 of each 4SM, 5SM, 6SM	99.95

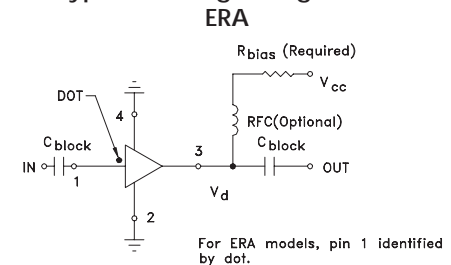
marking identification

Model	Alphanumeric Code
ERA-1, ERA-1SM	E1XX
ERA-2, ERA-2SM	E2XX
ERA-3, ERA-3SM	E3XX
ERA-4, ERA-4SM	E4XX
ERA-5, ERA-5SM	E5XX
ERA-6, ERA-6SM	E6XX

Note: optional E prefix designates location, optional Alpha suffix "XX" designates wafer identification.



typical biasing configuration



The Design Engineers Search Engine
 Provides Actual Data Instantly
 At: <http://www.minicircuits.com>

In Stock... Immediate Delivery
 For Custom Versions Of Standard Models
 Consult Our Applications Dept.

